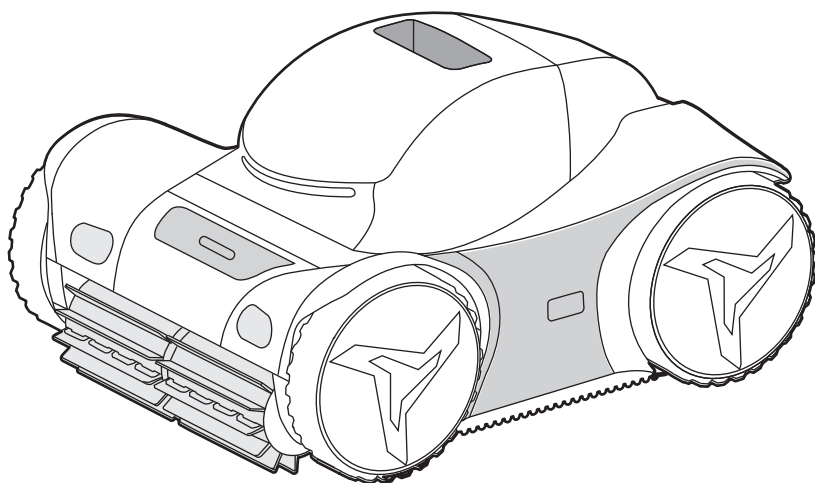


iGarden



iGarden Pool Cleaner M1 Series

— **USER MANUAL** —

Please read this manual carefully before installing and operating your pool cleaner, and keep this manual for future reference to ensure safe and effective use.

Table of Contents

1 Introduction 01

2 Important Safety Information 01

2.1 Warnings

2.2 Operating Conditions

3 What's In The Box 02

4 Getting Started 03

4.1 Charge

4.2 Assemble Parts

4.3 Quick Start

5 Learning The Control Panel 05

5.1 Control Panel Overview

5.2 Control Panel Details

6 Connect To WiFi 07

7 Care & Cleaning

07

7.1 Filter Box

7.2 Impeller

7.3 Roller Brush

7.4 Tyres

7.5 Battery

8 Troubleshooting

11

9 Cleaner Specifications

13

10 Regulatory & Compliance

15

11 Warranty

16

12 Support

16

1 Introduction

Thank you for purchasing the iGarden Pool Cleaner M1 Series. Reading and following instructions provided is crucial for a better user experience.

2 Important Safety Information

2.1 Warnings

Failure to comply with the instructions can result in injury, damage to the product or other property.

- **Designed for pools.** Use only to clean your pool. The cleaner is intended for residential use.
- **Children.** Keep children away from the cleaner. Individuals with reduced physical or mental abilities should not use it without supervision.
- **Proper installation is required.** Please follow the country's local installation standards. Damage from an incorrect installation is not covered by the warranty.
- **Do not enter the pool while the cleaner is running.**
- **Charging.** Use only the power supply and charge at least 3.5 meters (11.48 ft) away from the pool. If you notice anything unusual while charging, for example a strange smell, unplug it immediately and contact us.
- **Cleaning and maintenance.** Turn the cleaner off and unplug it before cleaning and maintenance. Only use original replacement parts from the manufacturer.
- **Control panel.** Make sure your hands are dry when using the control panel.
- **Repair.** Do not attempt to repair the device yourself, please contact us instead.
- **Using conditions.** The cleaner is recommended to be used in water deeper than 40cm (1.31ft) to protect its motor. When the battery level is below 30%, this cleaner will switch to floor-only cleaning mode. While cleaning the pool floor, it cannot traverse cross-slopes steeper than 30 degrees. Do not run the cleaner while adding chlorine to the water. Do not use this product during thunderstorms or bad weather.
- **Storage.** Do not expose this product to rain or direct sunlight for extended periods. Clean and dry the product after each use before storage. For long-term storage, unplug and neatly store the charger cable to prevent damage. Keep your cleaner in a cool, dry place with temperature between -10 to 45°C (14 to 113°F) and humidity between 30% to 70%.

- **Handling.** Lift the cleaner out gently. After removal, keep it in an upright position to drain water before storing it flat. Never lift the cleaner out of the pool by a slide rod, as it may damage the product.

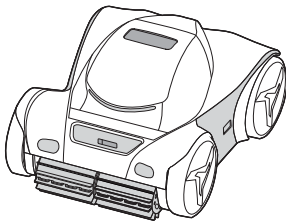
2.2 Operating Conditions

Parameter	Range
Working Water Depth (m)	0.4m-2.5m (Ideal 1m-2.5m)
Pool Water Temperature	4°C-35°C
pH level	7.0-7.8
Sodium Chloride Concentration (PPM)	Maximum = 5000 PPM
Chlorine Content (PPM)	Max 4 PPM

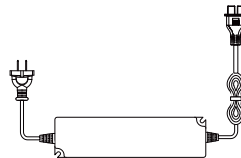
💡 NOTE:

The battery life of this product may be reduced if the pool water temperature is below 15°C / 59°F.

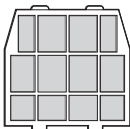
3 What's In The Box



Pool Cleaner



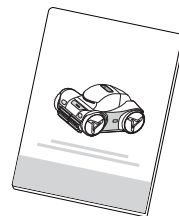
Charger



Filter



Hook



Manual

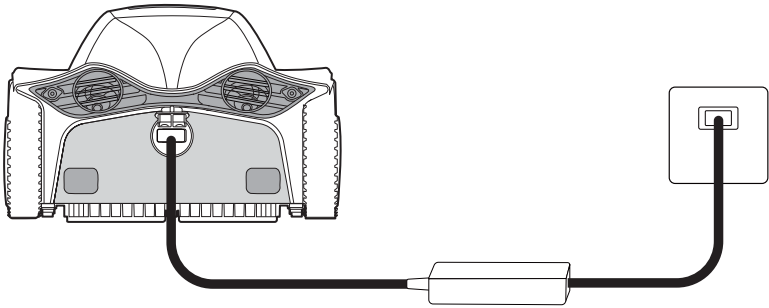
💡 NOTE:

The packaging of this product includes the above items. If there is any damage or missing parts, please contact the retailer.

4 Getting Started

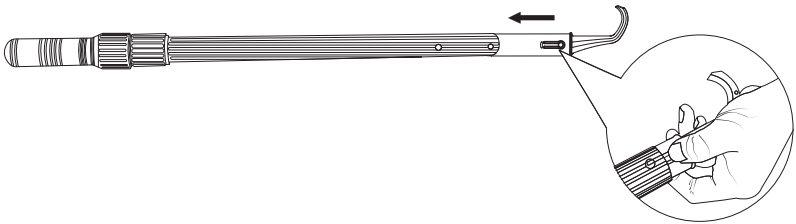
4.1 Charge

Uncap and plug the included charger into a power outlet (100-240V). Seeing all three indicator lights on, unplug and cover the cap back.



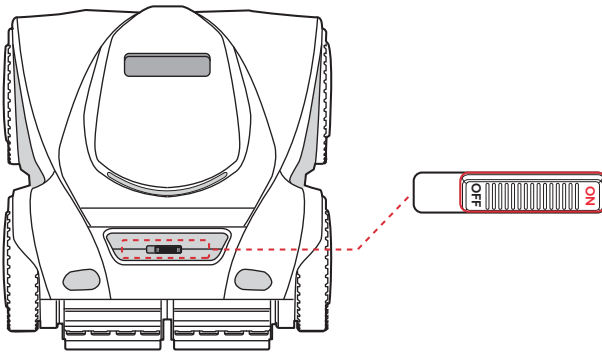
4.2 Assemble Parts

Attach the hook to the extension pole (not included in the package).

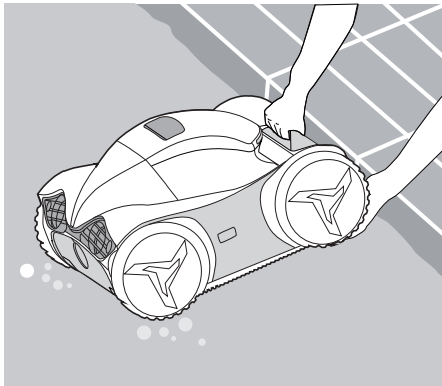


4.3 Quick Start

Switch the cleaner on.



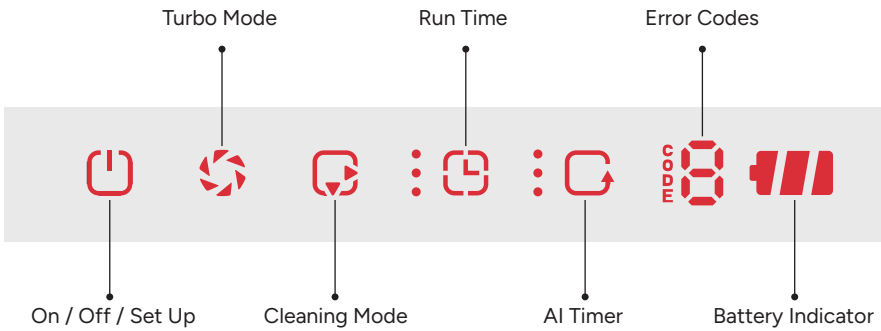
Place the robot in water, hold it and rotate the cleaner to let the air escape. See image below:










 **NOTE:**

Make sure it is submerged under water within 3 minutes after turning on, or it will automatically stop.

5 Learning The Control Panel



5.1 Control Panel Overview

Button	Icon	Effects	Function
On / Off / Set Up		Light Flashes / On	Set Up / Operation Starts
Run Time		1 / 2 / 3 LEDs or Off	1h / 1.5h / 2h or Low Battery
Cleaning Mode		Bottom / Top LED On / Off	Floor Only / Wall & Waterline Only
		*Both LEDs On	*Wall & Waterline first, then Floor
		*Both LEDs Off	*Full Coverage
AI Timer		1 / 2 / 3 LEDs or Off	Auto-Clean Every 24 / 48 / 72 h / Disabled
Turbo Mode		LED On / Off	Turbo Mode On / Off
Error Code		E1-E6	System Fault (see Troubleshooting)
Battery Indicator		LEDs On / Flash	20-100% Battery Levels / Charging

Important Cleaning Modes Explained*Wall & Waterline first, then Floor**

Recommended for most cleaning needs; does not clean tanning ledges or other shallow areas.

Full Coverage

Cleans Floor → Wall → Waterline to cover all areas (includes tanning ledges); may use more power than Wall & Waterline first, then floor.

5.2 Control Panel Details

Function	Condition	Response
Turn On Hold	3 s	Wake and Start Setting
Turn On Tap	After Setting	Save Setting and Auto-clean In Water
Preset Run Cycle	Tap AI timer button	Clean and stop until the first cleaning cycle is done. Auto-clean again after a 24h interval.
Low Battery	LED Flashes	< 15% Power Levels Parks and Stops

6 Connect To WiFi

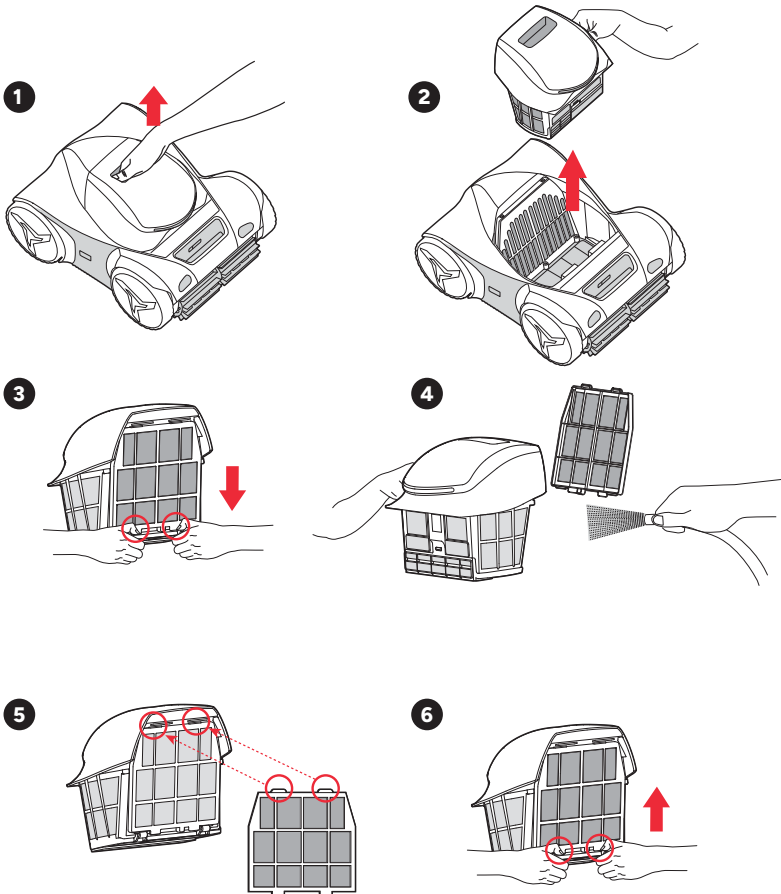
Hold Cleaning Mode for 3s. When you hear a tone, it is ready to pair. Connect device to network in the "iGarden Robotics" App before placing it into the water. Once the Control Panel lights up, the WiFi is set. Scan the QR Code below to download:



7 Care & Cleaning

7.1 Filter Box

1. Lift the handle to remove the filter basket.
2. Open and separate the double-layer filter box.
3. Rinse the filter box.
4. Align upper clips with the matching slots to restore the filter box.
5. Slide into bottom slots until it clicks into place.

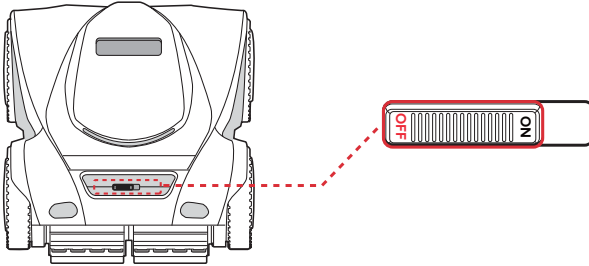


💡 NOTE:

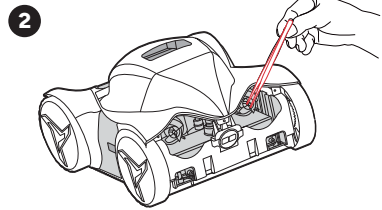
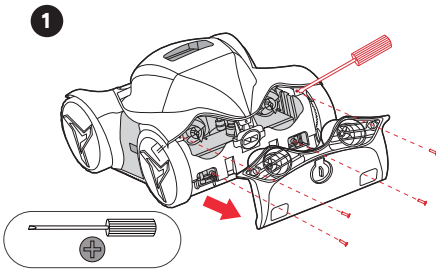
1. The robot comes equipped with a single-layer filter by default, which is generally sufficient for daily cleaning.
2. When dealing with fine debris such as sand, dirt, or settled dust, it is recommended to perform an initial clean with the single-layer filter first, then switch to the double-layer filter for a thorough clean to achieve optimal results.

7.2 Impeller

Turn off the cleaner when seeing performance declines.



- Unscrew and remove the back cover.
- Take out the impeller to clean debris.

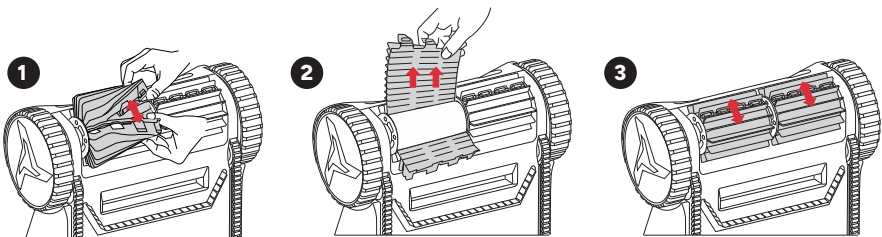


💡 NOTE:

Contact us for assistance when you encounter difficulties.

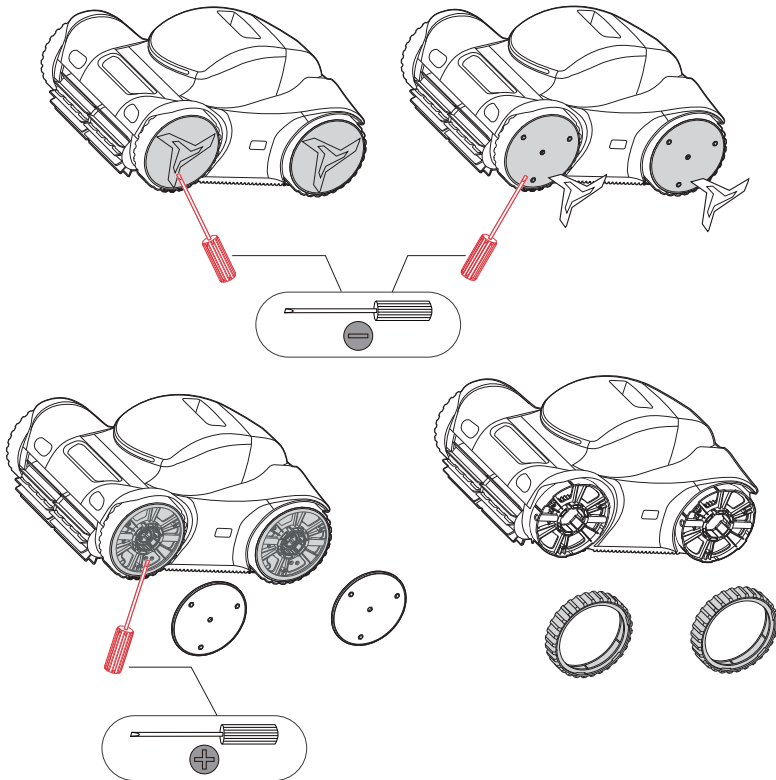
7.3 Roller Brush

Release tabs, slide on new brushes.



7.4 Tyres

Remove the cap from the wheel, and replace the worn tyre.



7.5 Battery

Fully charge the cleaner every 3 months.

8 Troubleshooting


Problem	Cause	Solution
Charging failure	Debris on the charging cable	Clean debris
	Charging cable damage	Replace charging cable
Startup failure	Invalid "Turn On" setting	Turn ON again
No movement/ pumping	Control panel wet	Dry the panel and try again
	Incorrect settings / operation	Restart the cleaner / reselect modes
	Low battery level	Fully charge
Moving but not pumping	Out of water	Submerge fully
	Turned on improperly	Turn it on after setup. LED ON indicates turning on successful
	Filter box full	Clean the filter box
	Impeller stuck	Clean impeller in OFF state

Pumping but not moving	Filter box full	Clean the box
	Inlet clogged	Clean the inlet
	Low battery level	Fully charge
	Motion motor stuck	Contact us for motor replacement
Not climbing	Belt stuck	Adjust the belt
	Worn belt	Replace the belt
	Roller brush stuck	Clean the roller brush
	Obstacles blockage. Stop for protection setup	Clean the obstacles and restart the cleaner
	Filter box full	Clean the box
	Bottom cleaning mode	Switch modes
Poor cleaning	Impeller stuck	Clean impeller in OFF state
	Filter box full	Clean the filter box
	Inlet clogged	Clean the inlet
	Low battery level	Fully charge

Abnormal operation	See potential causes identified in "Poor cleaning"	Fix the issue according to solutions listed in "Poor cleaning"
	Worn filter net	Replace the filter net
	Software glitch	Restart the cleaner
Code Error	E1–E6	Restart the cleaner. If the issue persists, contact us.

9 Cleaner Specifications

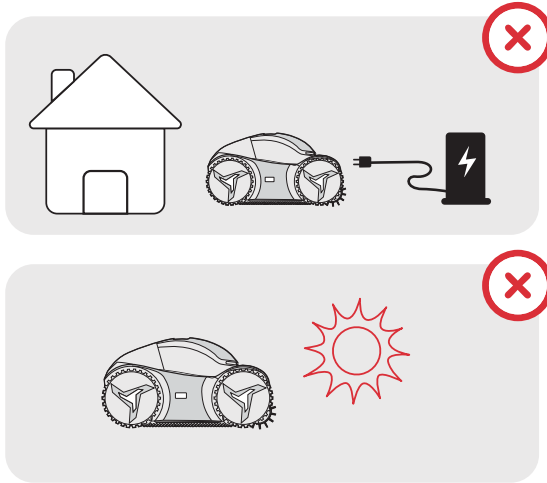
Model	M1-50	M1-80	M1-100
Mode: Floor Mode			
Battery Life	5h	8h	10h
Charging Time	Approx. 5h	Approx. 6h	Approx. 4.5h
Battery Capacity	7500 mAh Lithium Ion	10000 mAh Lithium Ion	10000 mAh Lithium Ion
Maximum Pool length	9m (29.5ft)	12m (40ft)	15m (50ft)
Optimal Pool Temperature	4~35°C/39.2~95°F		
Cleaning Mode	Floor Only; Wall & Waterline Only; Wall & Waterline first, then Floor; Full Coverage		
Turbo Mode	YES		
Multiple Cycle Option	1h / 1.5h / 2h / Max		

AI Timer	24h / 48h / 72h	
Mobile App	YES	
Filter Capacity	4.5L	
Filtration Accuracy	Double-layer	
Pump Flow Rate	12-19m ³ /h 200-315L/min 3170-5020GPH	16-23m ³ /h 266-383L/min 4227-6076GPH
Running Power	20-100W	
Moving Speed	12m/min (39.4ft/min)	
Number of Motors	4	
Charger Input	100-240VAC ~ 50/60Hz	
Running Voltage / Current	25.2V/1A	
Robot NW / GW	10.9kg/16.5kg (24lbs/36.4lbs)	
Product Dimensions (L×W×H)	482x392x249mm (19.0x15.4x9.8 inch)	
Package Dimensions (L×W×H)	580x448x330mm (22.8x17.6x13.0 inch)	
 NOTE: Tested in a pristine 3 x 8m rectangular pool under controlled lab conditions. Actual battery life may vary with pool shape, size, and water quality. The manufacturer reserves the right to modify the above parameters without prior notice.		

10 Regulatory & Compliance

Indoor Charging Only

Charge the cleaner indoors in a dry area away from direct sunlight.



Battery Recycling

The unit contains a lithium-ion battery. Recycle batteries at qualified facilities.

Recycling batteries benefits the environment and public health. Do not disassemble or dispose of batteries in household trash or municipal recycling bins.

For complete regulatory statements (FCC Caution, FCC Statement, IC Statement) and manufacturer information, visit: <https://store.igarden.ai/pages/warranty-policy>



Situations Not Covered by Warranty

- Failure to comply with the instructions.
- Product damage caused by misuse or any reason other than manufacturer defects.
- Damage caused by cleaning and maintenance performed by unauthorised third parties.
- Batteries damaged by unauthorised third parties.
- Overcharging the battery using a non-genuine input power cable.
- Using non-genuine accessories that cause the product to malfunction.

11 Warranty

Full Unit (motor, battery, electronics): 3 years

Consumables (brushes, baskets, filters, tracks): 12 months

For Australia market

Our goods come with guarantees that cannot be excluded under the Australian Consumer Law. You are entitled to a replacement or refund for a major failure and compensation for any other reasonably foreseeable loss or damage. You are also entitled to have the goods repaired or replaced if the goods fail to be of acceptable quality and the failure does not amount to a major failure.

For complete warranty terms—including exclusions, service process, and limitations—please visit:

<https://store.igarden.ai/pages/warranty-policy>

12 Support



Email: support@igarden.ai (AU & US)



Official Website: www.igarden.ai



Facebook: iGarden



Toll-free(AU): (+61)1800-716-885

© 2025 iGarden All rights reserved. Version: M1-Manual-V2.4 (EN)

Full legal terms and updated specs: <https://store.igarden.ai/pages/warranty-policy>

This product is proudly supplied by:



www.poolpro.com.au

iGarden

 www.igarden.ai

This product is proudly supplied by:



www.poolpro.com.au

Version: M1-Manual-FLR038-V2 (EN)

Thank you for choosing our Cordless Robotic Pool Cleaner.